

# **Arch Grid** **Compilation of SGH Anomalies** **Copper Pathfinder Class**

1:6,000  
 UTM Z7 NAD83  
 0 50 100  
 Meters

★ Vertical projection of the highest possibility of Ni-Cu PGE mineralization. Estimated 50-100m deep.

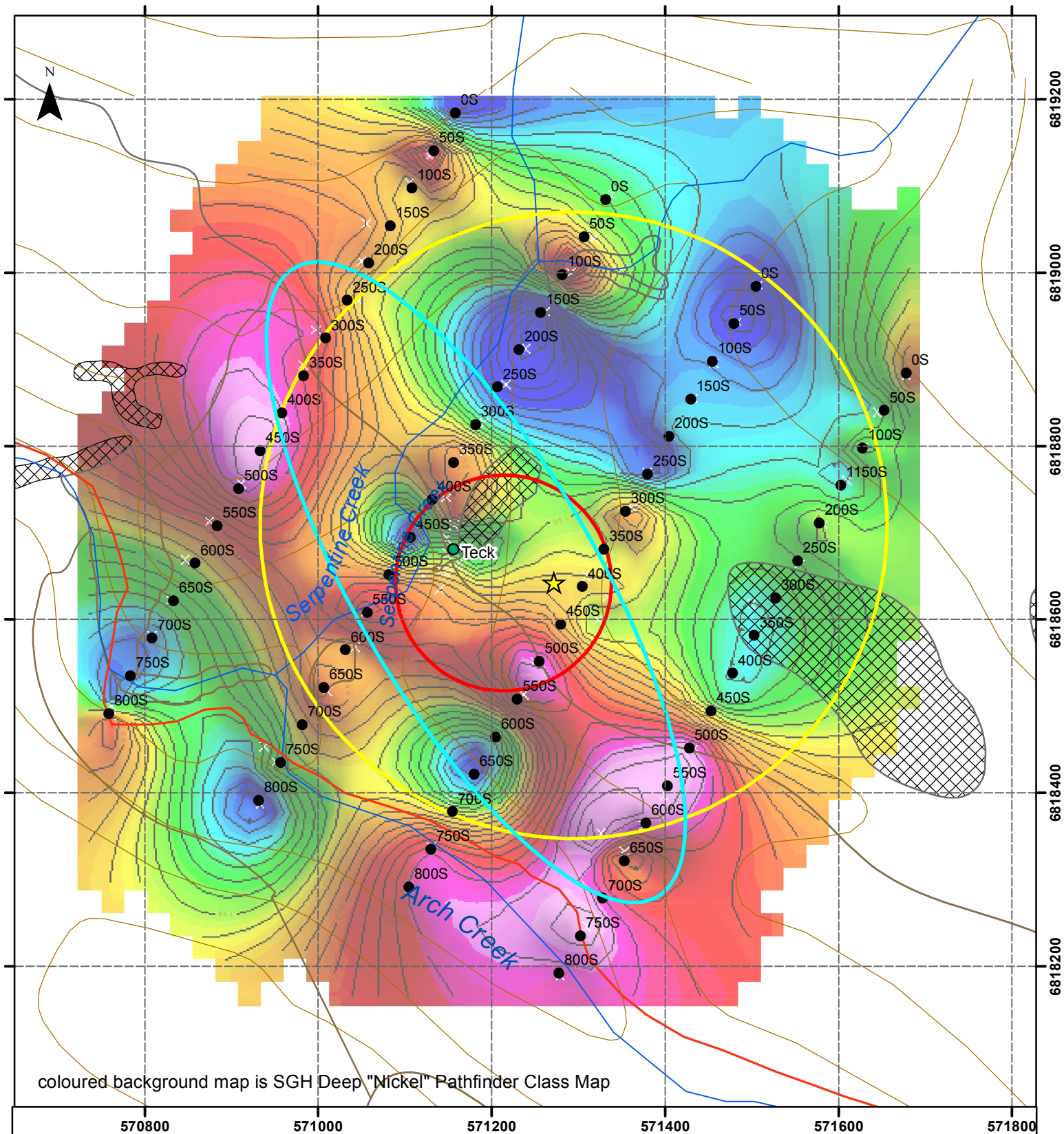
## **SGH Anomalies**

- Cu Redox Cell
- Deep Ni Trend
- Ni Redox Cell

Road



ultramafic sill



## Arch Grid Compilation of SGH Anomalies Deep Nickel Pathfinder Class

1:6,000  
UTM Z7 NAD83  
0 50 100  
Meters

★ Vertical projection of the highest possibility of Ni-Cu PGE mineralization. Estimated 50-100m deep.

### SGH Anomalies

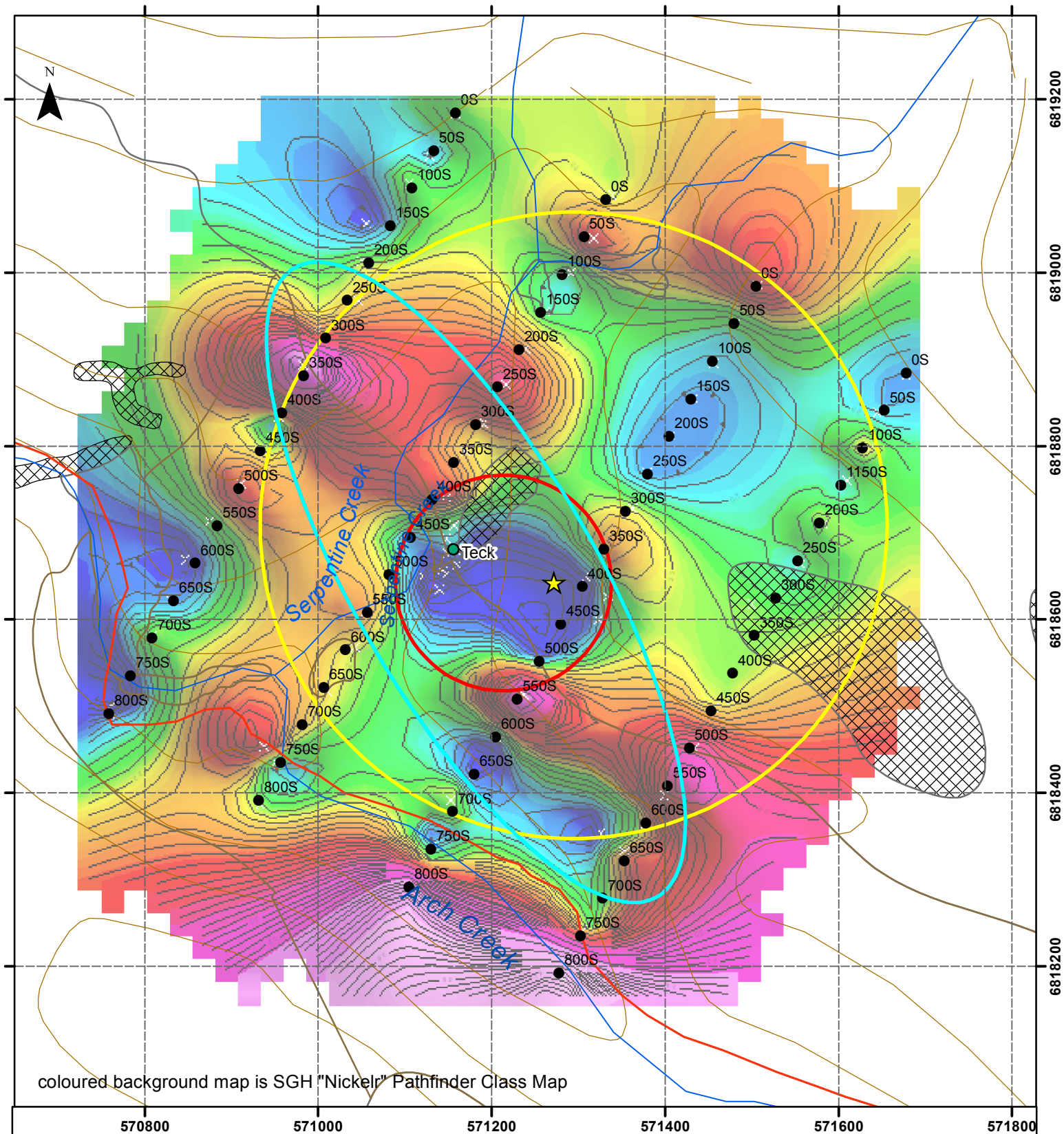
  Cu Redox Cell  
  Deep Ni Trend  
  Ni Redox Cell

— Road



ultramafic sill





# **Arch Grid** **Compilation of SGH Anomalies** **Shallow Nickel Pathfinder Class**

★ Vertical projection of the highest possibility of Ni-Cu PGE mineralization. Estimated 50-100m deep.

## **SGH Anomalies**

- Cu Redox Cell
- Deep Ni Trend
- Ni Redox Cell

Road

ultramafic sill

1:6,000  
 UTM Z7 NAD83  
 0 50 100  
 Meters